

Product category: Mattresses

Sub category: Air mattresses

Code : QDC 5010

Name: Overly pressure care air mattress

## Air Mattress stage 1,2 AND 3 pressure care

### - Home Care, Frail Care, Clinic and General Wards

Suggested patient weight less than 100 kg Patient is mobile or semi mobile	
Overlay air mattress BUBBLE PAD for the treatment of bedsores, more properly known as pressure ulcers or decubitus ulcers.	
<b>QDC 5010</b> Mattress and Pump	'Stage 1-3 Pressure Care Patient Weight 150 kg A/B Two group alternating cycle mode
	'Mattress Alt Pressure QDC5010 Supplied with a quilted zip on cover and flaps. CPR, Static mode and Pillow function. 17 Cells 12.5 cm in diameter. Inflated size 200 x 90 x 12.8 cm

### B ( 1-in-2 Alternating Mode )

Traditional A/B 2 Groups Alternating Cycle Mode

$18 \times \frac{1}{2} = 9$  cells (Quantity of the Supporting Cells)

$\frac{80}{9} = 8.9\text{kg}$ /cell (Support Weight by Each Cell)

A/B 2 Groups Alternating Cycle Mode (1-in-2)

### Therapy: Alternating

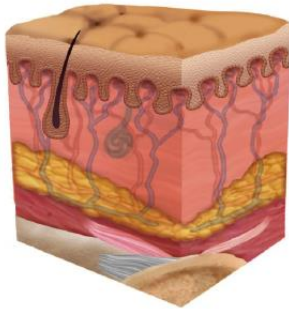
Status of discharging

Status of charging

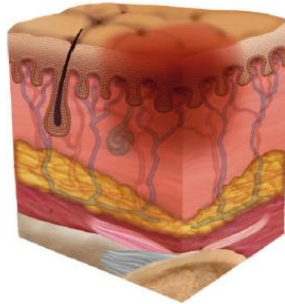
Status changed and scattered of body pressure

A B

### Healthy Skin



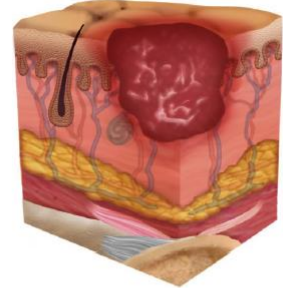
### Stage 1 Pressure Injury



#### Category/Stage I: Nonblanchable Erythema

Intact skin with non-blanchable redness of a localized area usually over a bony prominence. Darkly pigmented skin may not have visible blanching; its color may differ from the surrounding area. The area may be painful, firm, soft, warmer or cooler as compared to adjacent tissue. Category/Stage I may be difficult to detect in individuals with dark skin tones. May indicate "at risk" individuals (a heralding sign of risk).

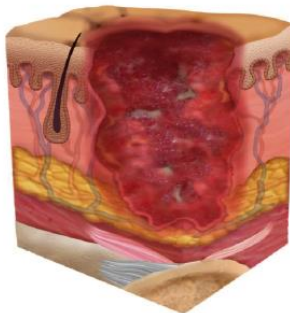
### Stage 2 Pressure Injury



#### Category/State II: Partial Thickness Skin Loss

Partial thickness loss of dermis presenting as a shallow open ulcer with a red pink wound bed, without slough. May also present as an intact or open/ruptured serum-filled blister. Presents as a shiny or dry shallow ulcer without slough or bruising. \*This Category/Stage should not be used to describe skin tears, type burns, perineal dermatitis, maceration or excoriation. \*Bruising indicates suspected deep tissue injury.

### Stage 3 Pressure Injury



#### Category/Stage III: Full Thickness Skin Loss

Full thickness tissue loss. Subcutaneous fat may be visible but bone, tendon or muscle are not exposed. Slough may be present but does not obscure the depth of tissue loss. May include undermining and tunneling.

The depth of a Category/Stage III pressure ulcer varies by anatomical location. The bridge of the nose, ear, occiput and malleolus do not have subcutaneous tissue and Category/State III ulcers can be shallow. In contrast, areas of significant adiposity can develop extremely deep Category/Stage III pressure ulcers. Bone/tendon is not visible or directly palpable.

# QDC-5010

**12.8cm 5" PVC Nylon Cell**  
 Alternating Pressure Mattress With Pump

The QDC-5010 is an effective alternating overlay system combined with static therapy mode. By having 17 pcs of 12.8cm (5") individual cells inflate and deflate alternatively in cycles, patients receive their adequate pressure relief. The system can be switched to a static mode to facilitate all kinds of nursing procedures including dressing changes. With Air-pressure Dial Adjustment, QDC-5010 is easy to use and is recommended for patients at medium risk to high risk of pressure ulcers (Stage I/II/III).



Nylon PU Cover with Cotton Lining  
 Biocompatibility, Vapor Permeable & Water Resistant with CA117 Flame Retardant Level



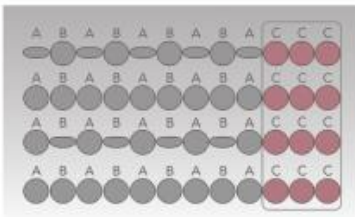
Zipper-All-Around Cover Reduce ingress of unwanted fluid and can be completely removed for laundry



Ventilated Low-Air-Loss Cells  
 Wicks moisture away to keep the patient more comfortable



CPR Straps  
 Quickly deflate the mattress for emergencies



Alternating function (Group A and Group B as shown in the picture)

The pump will be inflate and deflate for the cell with cyclicity, to change the contact position between the patient and the bed, so that to promote the blood circulation to prevent the bedsore and recovery the bedsore, reduce the patient's pain and the nursing labor intensity.

Pillow function (Group C as shown in the picture)

The cell of the head position won't be alternating, to provide the most comfortable for the patient.



Spring-Loaded Tube  
 Inside the air tubes, springs are installed to prevent any kink or unwanted bending on the tubes that connects pump and mattress to maintain consistent smooth airflow



Slip-Resistant Elastic  
 Convenience to fix the mattress and avoid the movement

# Alternating Pressure Air Pump

## P3000A2QB Pump (5" Cell Mattress Series)



Air-pressure Dial Adjustment

Static mode helps with patient repositioning and all kinds of nursing care

Low pressure alarm feature increases patient safety



Quick Connector



Hanger Design

Transfer Function



### Easy-to-use Quick Connector with Transfer Cap

Mattress can be transformed from a powered support surface to a sealed static air mattress, providing a uniform stable surface for patient transportation.

## P3000A2QB3 Pump (8" Cell Mattress Series)



Quick Connector

Transfer Function

### Technical Parameters Of The Pump the Most Quiet Pump in China

P3000A2QB  
P3000A2QB3

Dimension (L×W×H)	30×13.5×11 cm
Case Material	Flame Retardant ABS
Supply Voltage	AC 220-240v,50Hz ; 100-120v,60Hz
Operating Cycle	12min (50Hz) ; 10min (60Hz)
Air Output	7.5-8.5 L/Min
Output Pressure Range	55-120 mmHg
Warranty	24 Months

\*Economy P3000N2EB Pump Optional



\*Advanced P3000A2CB Pump Optional (CPC Quick Connector)

